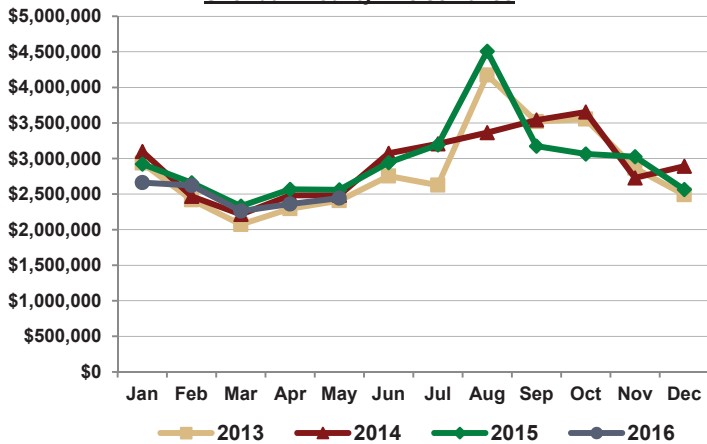
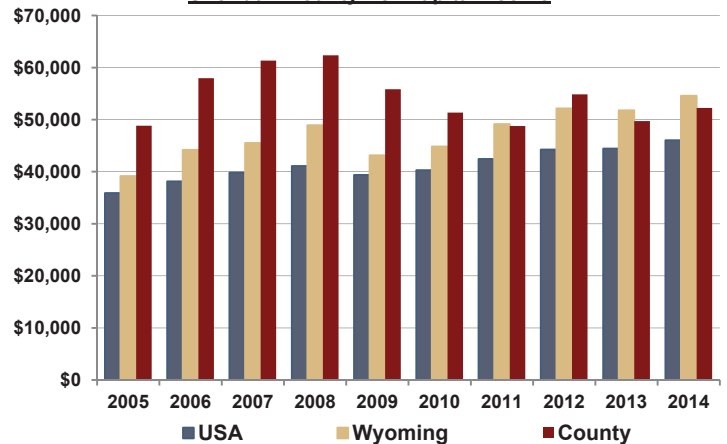


**Sheridan County Excise Taxes**



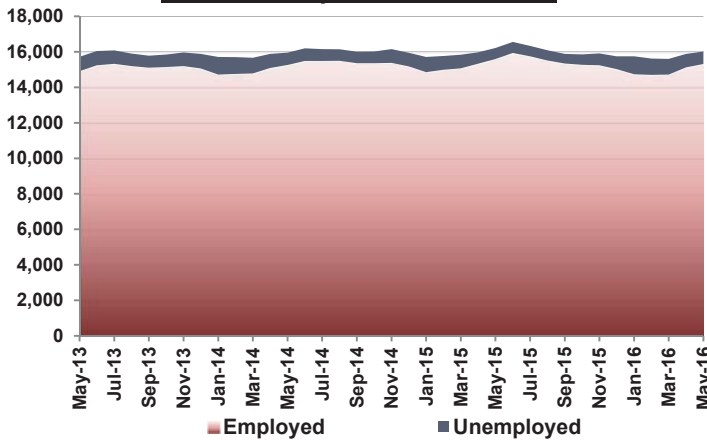
May 2016 = \$2,442,647 (4.6% less than May 2015).  
 Calendar YTD 2016 = \$12,348,339 (5.3% less than YTD 2015).

**Sheridan County Per Capita Income**



2014 Per Capita Income (compared to 2013) = \$52,239 for County (5.1% more); \$54,584 for WY (5.4% more); and \$46,049 for USA (3.6% more).

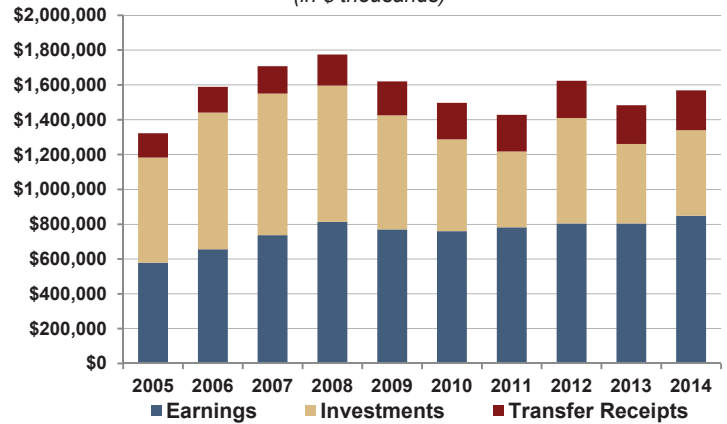
**Sheridan County Resident Labor Force**



May 2016 Employed = 15,317 (1.3% more than April 2016).  
 Calendar YTD 2016 Avg. = 14,920 (1.6% less than YTD 2015).

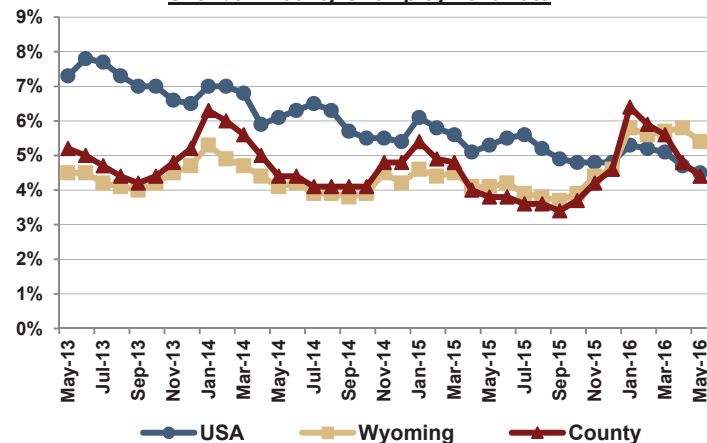
**Sheridan County Total of all Personal Incomes**

(in \$ thousands)



2014 Total [\$1,000's] = \$1,568,833 (5.8% more than 2013); Earnings = \$847,949; Investments = \$492,368; and Transfer Receipts = \$228,516.

**Sheridan County Unemployment Rate**



May 2016 Unemployment = 4.4% (April 2016 was 4.8%).  
 Calendar YTD 2016 Avg. = 5.4% (2015 YTD Avg. was 4.6%).

**Sheridan County Total of all Transfer Receipts**

(in \$ thousands)



2014 Total [\$1,000's] = \$228,516 (2.7% more than 2013); Retirement = \$213,362; Assistance = \$11,322; and Unemployment = \$3,832.



## Per Capita Income and Total Personal Income

There are many ways to measure income. Per capita income (PCI) is a frequently used measure of income, and it is helpful to consider PCI changes over a long period of time, as it gives a general idea of the overall health of the economy. The PCI of every county in the nation is estimated each year by the U.S. Department of Commerce Bureau of Economic Analysis (BEA).

Basically, the BEA estimates every kind of income, and then divides the total personal income in each county by its population (as determined by the U.S. Census Bureau) to calculate PCI. The most recent PCI data that is available is for 2014.

Calculation of PCI starts with its three main components: Earnings, Investments, and Transfer Receipts. Transfer Receipts are payments to people for which no current services are performed, including Retirement funds, Assistance from the government (e.g., food stamps), and Unemployment insurance compensation.

From 2005 to 2014, national PCI grew 28.3% (to \$46,049)

and Wyoming's PCI grew 39.4% (to \$54,484). Within the state, Weston County (66.4%), Sweetwater County (58.1%), and Converse County (52.6%) experienced the most PCI growth, as shown on the chart above. Wyoming's PCI grew \$15,420 from 2005 to 2014, rising to \$52,826.

Total personal income in Wyoming grew to \$31.9 billion in 2014, growing 58.3% since 2005. The five counties in Wyoming with the largest total personal income together represent 59.5% of Wyoming's total personal income (Natrona = \$4.9 billion; Laramie = \$4.7 billion; Teton = \$4.5 billion; Sweetwater = \$2.5 billion; and Campbell = \$2.4 billion).

**Community Builders, Inc. (CBI) can provide you with much deeper analysis of the topics presented in this newsletter, and many others as well. We have 60+ years of experience with community and economic development. CBI provides business plans, feasibility studies, grant writing, strategic planning, facilitation, training, and other consulting services.**

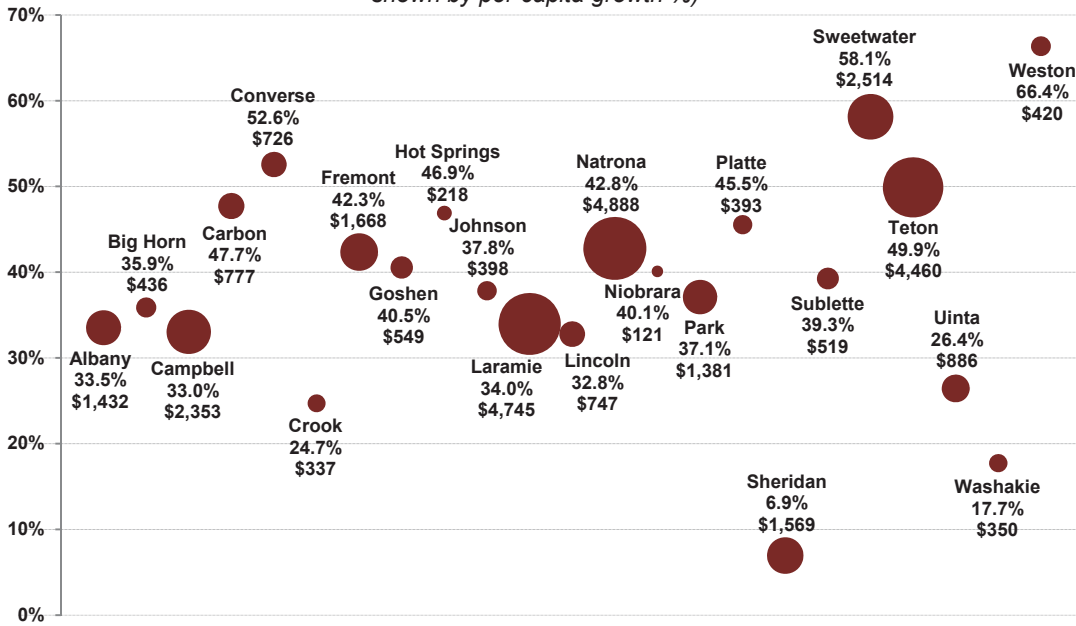
**Community Builders, Inc.**  
 873 Esterbrook Road  
 Douglas, WY 82633  
 (307) 359-1640  
 Joe@consultCBI.com

For the three components of personal income, from 2005 to 2014, Sweetwater County led growth in total Earnings (87.5%), Sublette County led total Investment income growth (90.6%), and Teton County led total Transfer Receipts growth (94.4%). Within the Transfer Receipts component, Teton County had the fastest growth rate for Retirement (93.2%), and for Assistance (131.9%), and Sublette County led Unemployment Insurance compensation growth (402.6%).

In terms of actual dollars for personal income growth, Natrona County led the state in growth of Earnings (\$1.2 billion), Teton County led Investments (\$1.5 billion), and Laramie County generated the most growth of Transfer Receipts (\$298 million). For the components of Transfer Receipts, Laramie County grew the most in Retirement (\$275 million) and Assistance (\$20 million), while Natrona County saw the most growth of Unemployment insurance compensation (\$4 million).

**Total Personal Incomes by Per Capita Income Growth Rate (2005-2014)**

(Size of bubble is county's total personal income in \$ millions, shown by per capita growth %)



### CHANGING THE WAY WYOMING FINDS HELP

**2-1-1 is an easy to remember telephone number that connects callers, at no cost, to information about critical health and human services available in communities around Wyoming.**

By dialing 2-1-1, callers can find information and receive referrals on:

- ✓ Rent/Utility Assistance
- ✓ Mental Health Resources
- ✓ Food Banks/Pantries
- ✓ Soup Kitchens
- ✓ Homeless Shelters
- ✓ Clothing/Household Goods
- ✓ Health Clinics
- ✓ Youth Programs
- ✓ Legal Assistance
- ✓ Job Training/Assistance
- ✓ Senior Services
- ✓ and more!

